



Optimized Laundry Processes with RFID

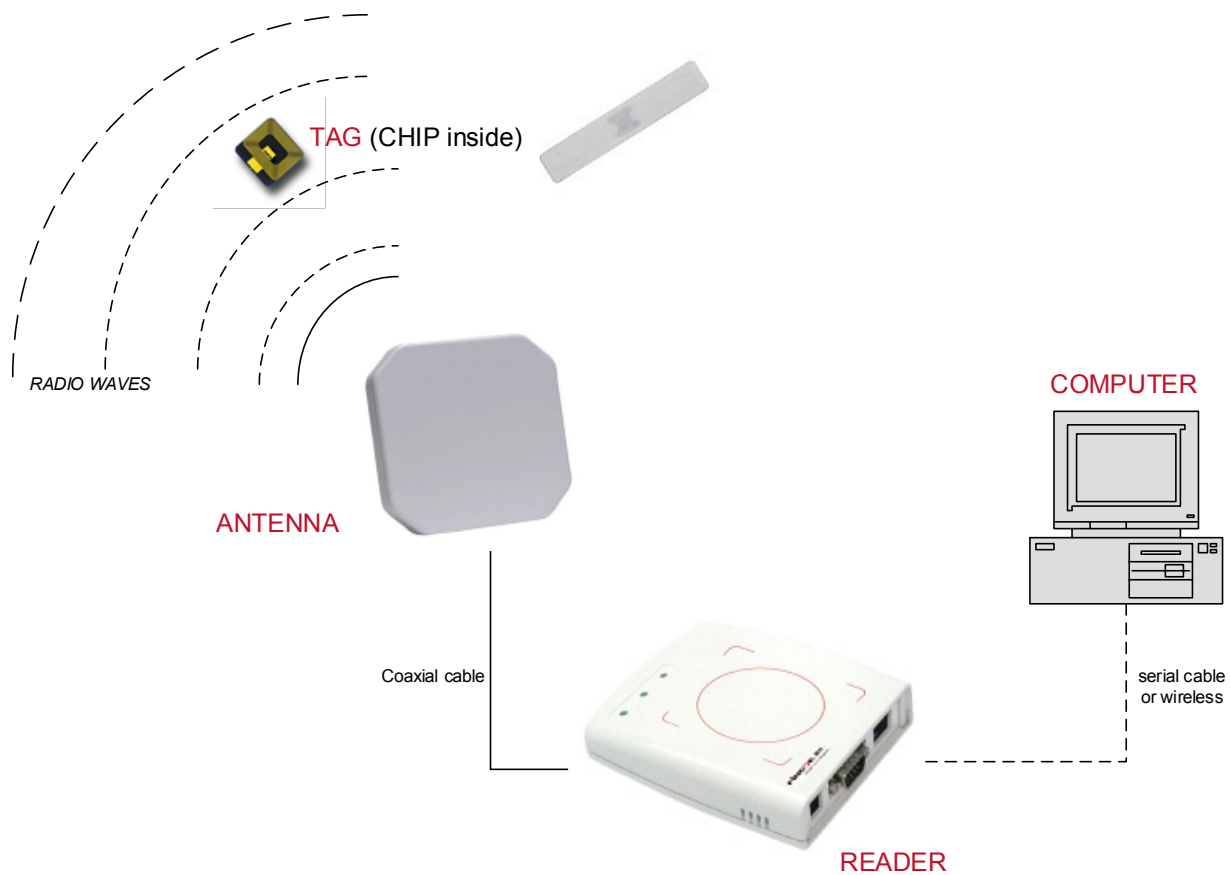
RFID Surgical Scrubs System



What is RFID



RFID, Radio Frequency Identification.





Advantages of **RFID** vs. **Barcodes**

- ▶ No line of sight
- ▶ Multiple read simultaneously
- ▶ Speed of operation
- ▶ Read/write
- ▶ Read reliability
- ▶ Durability
- ▶ Difficult to replicate
- ▶ Data storage



PK





Advantages of **UHF** vs. **HF** in Laundry

- ▶ **Short range readability (advantage: tie)**

Both HF and UHF technologies allow for equal short range readability.

- ▶ **Long range readability (advantage: UHF)**

UHF technology far surpasses HF technology, allowing tags to be read up to 2-4 meters away.

- ▶ **Rate of data collection (advantage: UHF)**

UHF tags can be read much quicker than HF tags. Up to hundreds of UHF tags can be read simultaneously. This is a benefit HF technology cannot keep up with.

- ▶ **Handheld read range (advantage: UHF)**

UHF Handheld can read hundreds of tags simultaneously while HF Handheld can only handle one by one.

- ▶ **No shielding of adjacent tags (advantage: UHF)**

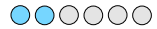
Because of the way HF technology works, adjacent tags can be shielded by other tags' magnetic fields. This leaves some tags unread and severely undermines the reliability of HF technology. This shielding does not occur with UHF technology.



PK



System Process Coverage



Clean inbound

Washed scrubs inbound scanning, and check according to what shipped



Sorting and Stock check-in

Piece or multiple anonymous SKU scrubs scanned, system responses stock slot



Operator places scanned pieces at right slot location

Dispensing and Stock check-out

Employee card swiped, operator selects types of scrubs and system responses stock slot



Scrubs scanned and associated to the employee



Soiled Returning

Soiled scrubs dropped into chute by employee

System scan-in and returns the receipt



Soiled outbound

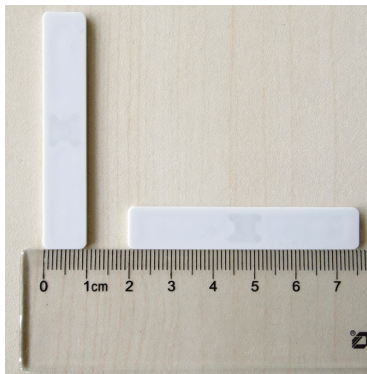
Print bill of shipping for laundry by chuted records

Washing Process

Components & Function



RFID Washable Tag



- ▶ 902-928MHz, 865.6-867.7 MHz Frequency
- ▶ Size & Weight, 55(W)x10(D)x1.6(H)mm, 1g
- ▶ Unique Identification Code
- ▶ UHF technology to read hundreds of tags simultaneously
- ▶ The tags can survive harsh industrial laundry process
- ▶ Performs at a 99.9% accuracy rate with a 2-3 meters read range
- ▶ High pressure withstanding up to 60 bars
- ▶ 200 washing cycles or 3 years from shipping date warranty, whichever comes first

Components & Function

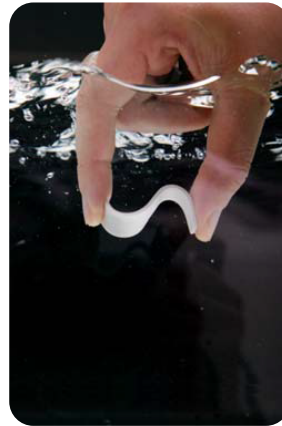


RFID Washable Tag

Waterproof



Corrosion-Resistant



High Temperature-Resistant



Tagging

A small pocket embroidered with the users' logo is stuffed with an RFID tag and sewn onto towels, linens and uniforms.

Components & Function



RFID Smart Workbench



- ▶ Tag Manager (*Commissioning, Discarding, Tag replacing etc.*)
- ▶ Clean inbound (*Could setup a tunnel for bulk check-in in future*)
- ▶ Clean sorting (*Stock check-in and System responses stock slot location*)
- ▶ Dispensing (*Stock check-out and associated employee's ID*)
- ▶ Soiled outbound (*Print bill of shipping for laundry*)
- ▶ Dashboard



Components & Function



RFID Chute Station



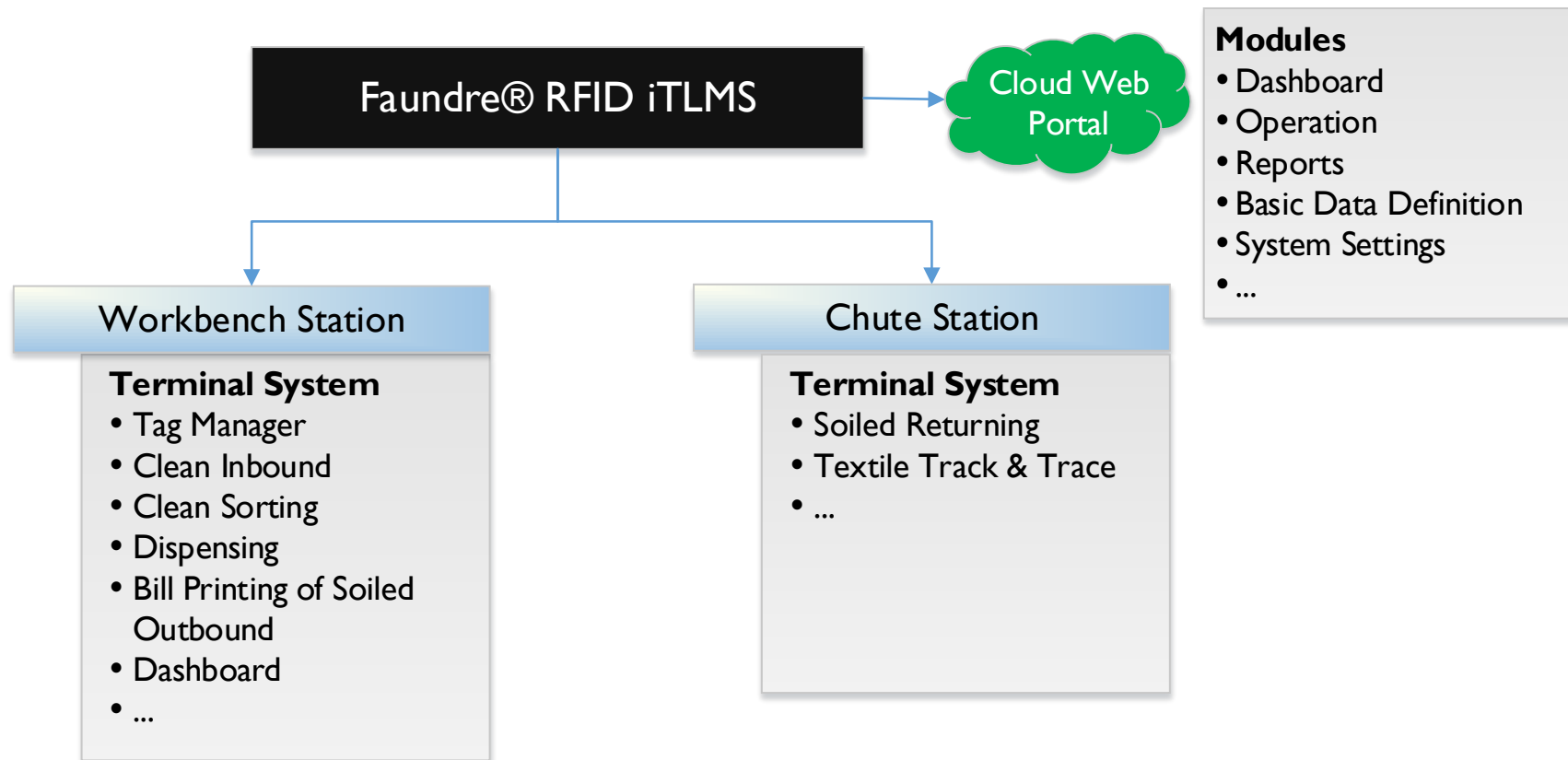
- ▶ Soiled chute in
- ▶ Receipt printing



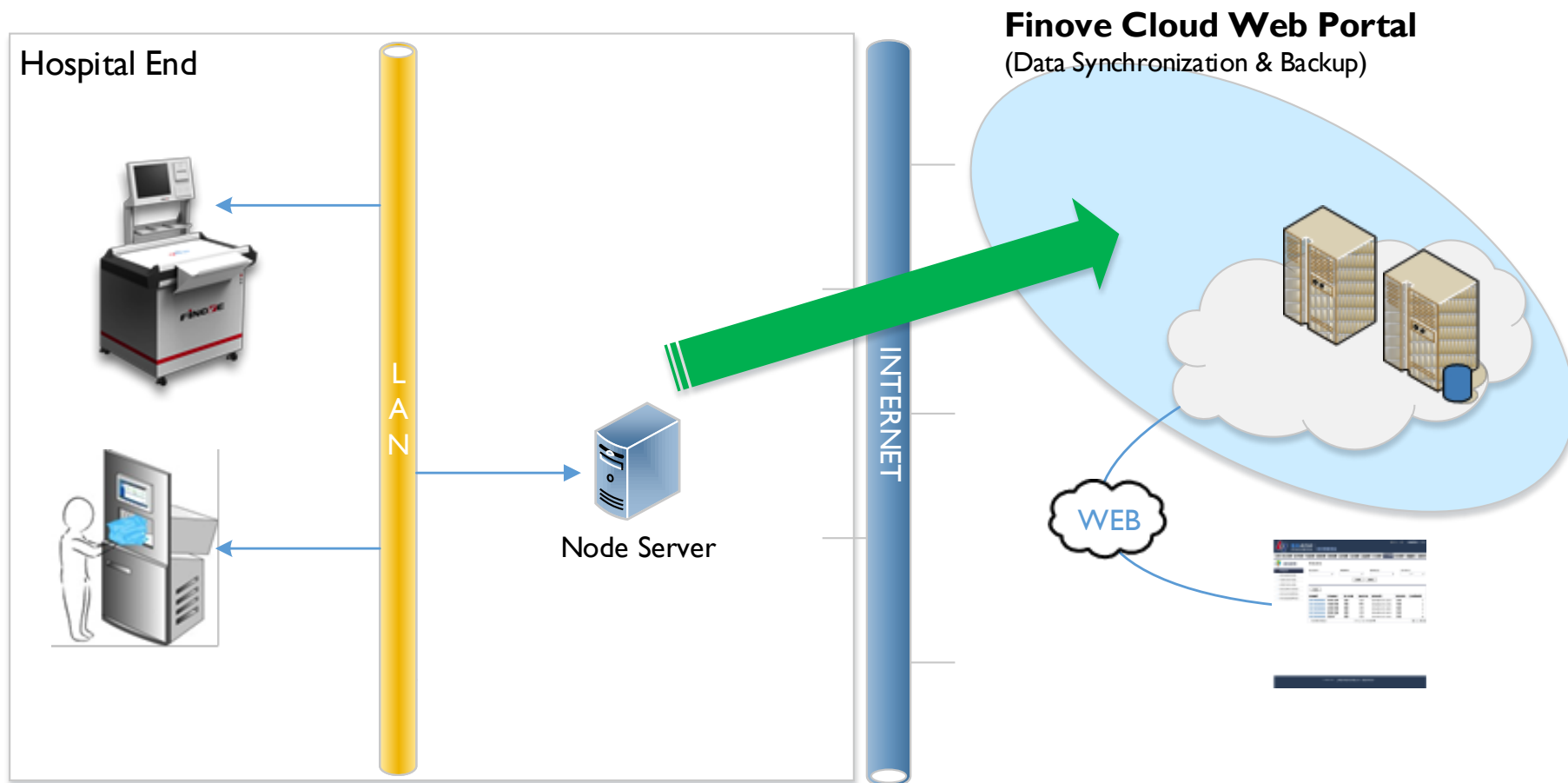
Components & Function



Software



Network topology



Order list



Products & Services	Description	Quantity
Cloud Software		
Finove Faundre® iTLMS	License Limits - Faundre® Cloud Web Portal & Data Storage, One server node data synchronized to Cloud, and no items managed limits	1
RFID Tags		
UHF-RFID Washable Tags	200 washing cycles or 3 years from shipping date warranty, whichever comes first	10,000
Equipment & Supplies		
Tag Woven Pouch	for UHF-RFID washable tags sewing	10,000
UHF-RFID Smart Workbench	Integrated with touch screen PC, printer, high grade RFID reader & antenna, one terminal OS and Faundre® software licence	1
UHF-RFID Chute Station	Integrated with touch screen PC, printer, high grade RFID reader & antenna, one terminal OS and Faundre® software licence	2
Services		
Onsite Installation and Training	Man-day	6
One Year Support Package	Annual renewal fee for customer support and software updates, Faundre® Cloud Web Portal and data storatge	1
Others		
Travel Expense	Tickets fly, hotels and meals of the technicians	1

Customer Responsibilities



- *Provide and maintain One (1) networked server that meet the minimum system requirements below:*
 - *Windows Server 2003 or Windows Server 2008*
 - *2GHz Processor; 4GB RAM; 100 GB Hard Drive (free space); RAID 1 Recommended*
 - *High-Speed Internet Connection with Internet Explorer*
 - *VPN port(PPTP, L2TP) allowed at firewall*
- *Provide and maintain Microsoft SQL Server 2008 with specifications equal to or greater than Microsoft's minimum requirements for the SQL Server program being used.*
- *Install network cabling, ports and electrical outlets, if needed, per specifications provided by Ugaiya.*
- *Attached (sew) UHF-RFID tags to scrubs, per specifications provided by Ugaiya.*
- *Provide staff to be trained and to process scrubs for the days while Ugaiya's engineer is onsite.*